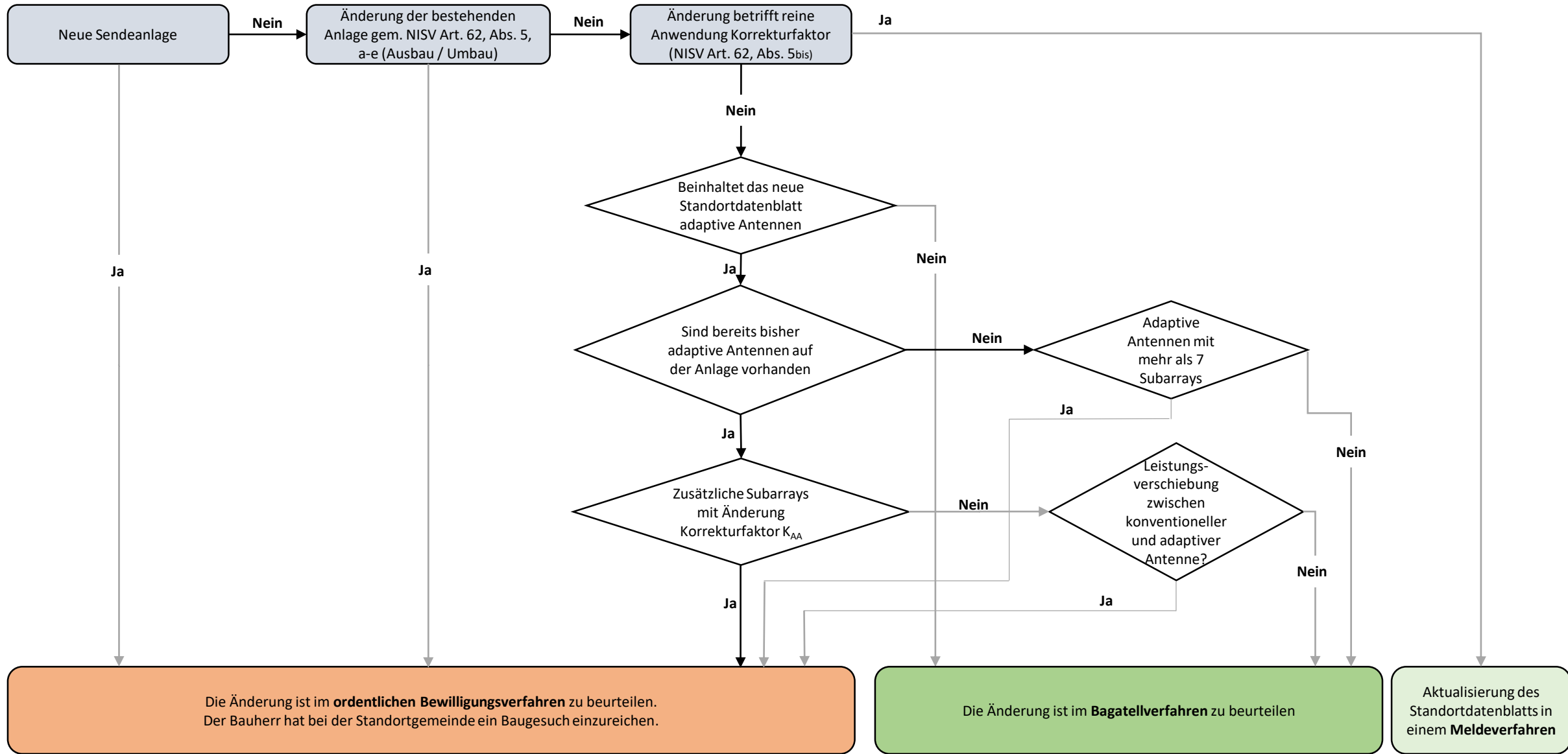
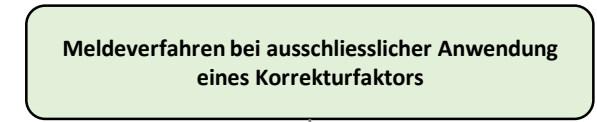
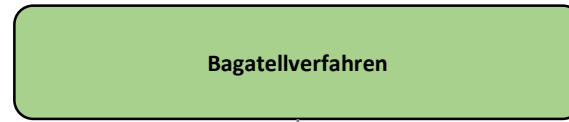


Anhang 1: Verfahren Mobilfunk-Basisstationen Kanton Thurgau, Flussdiagramm seit 1. April 2022

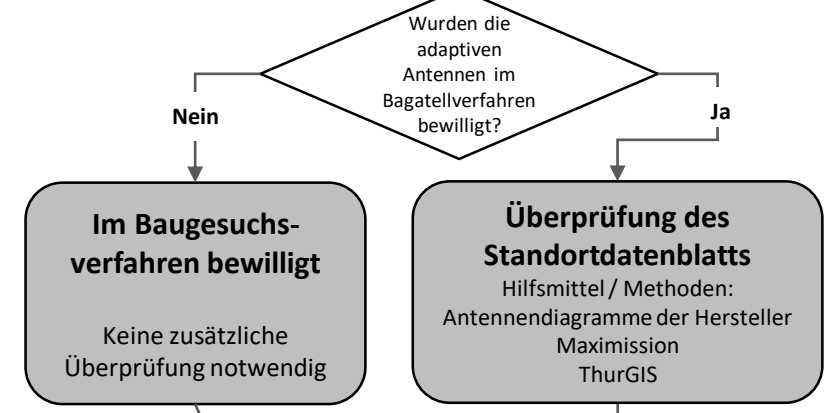
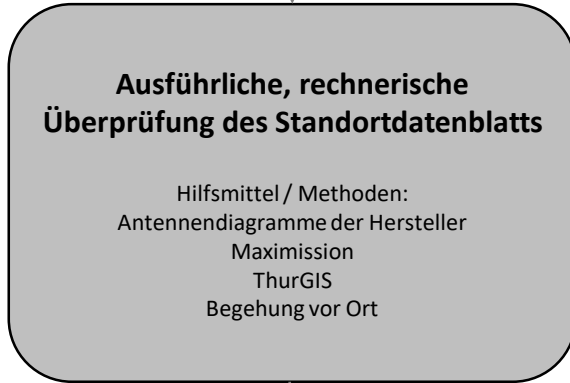


Anhang 2: Beurteilung der Verfahren durch AfU, Mobilfunk-Basisstationen Kanton Thurgau, 1. April 2022

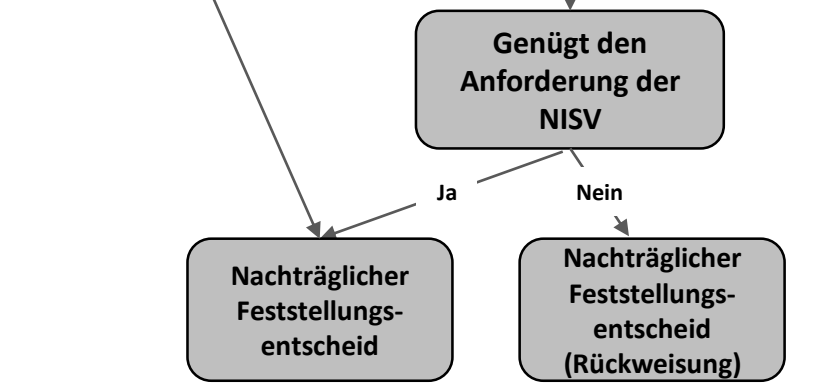
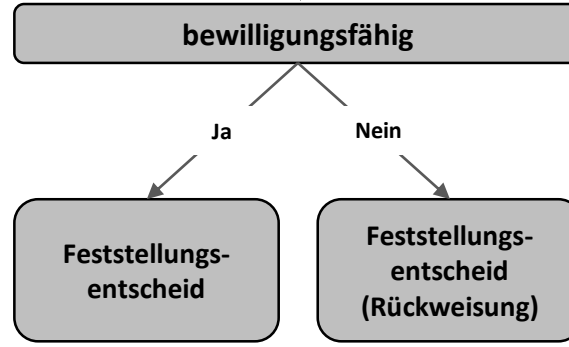
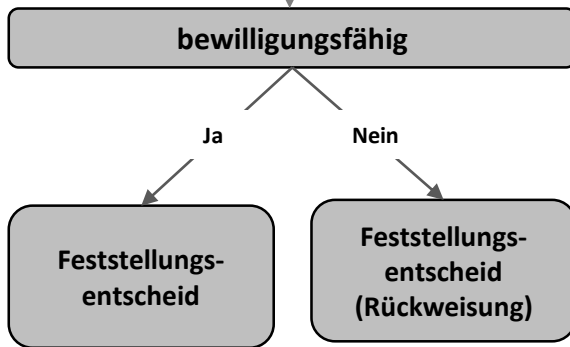
Verfahren



Überprüfung durch AfU



Schriftlichkeiten



Empfänger

